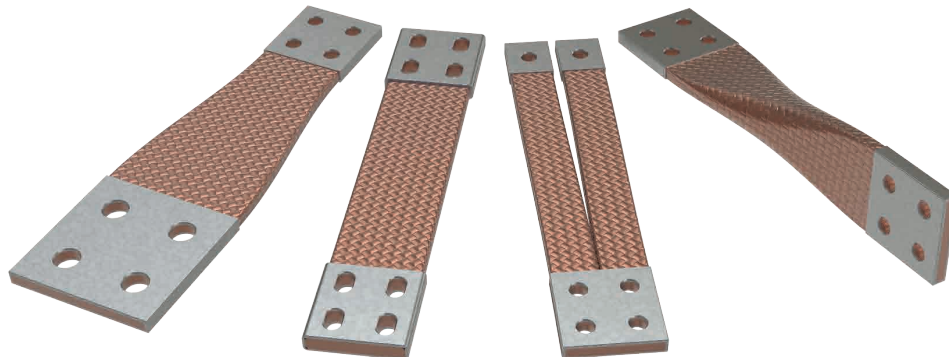


# BRAIDED POWER CONDUCTORS

standard and custom made solutions



Flexible connections for power distribution:

- Transformers
- Bus duct systems
- Electrical panels
- Generators
- Unit power supply
- Rectifiers
- Inverters
- Renewable energies
- Railways applications

### Main characteristics

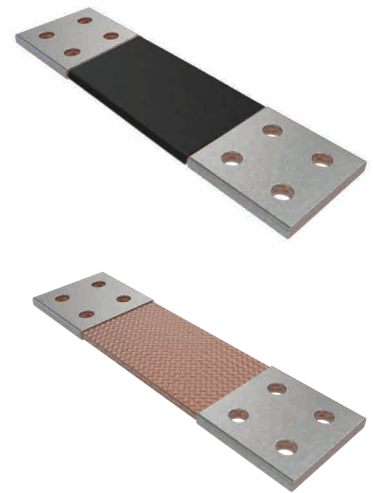
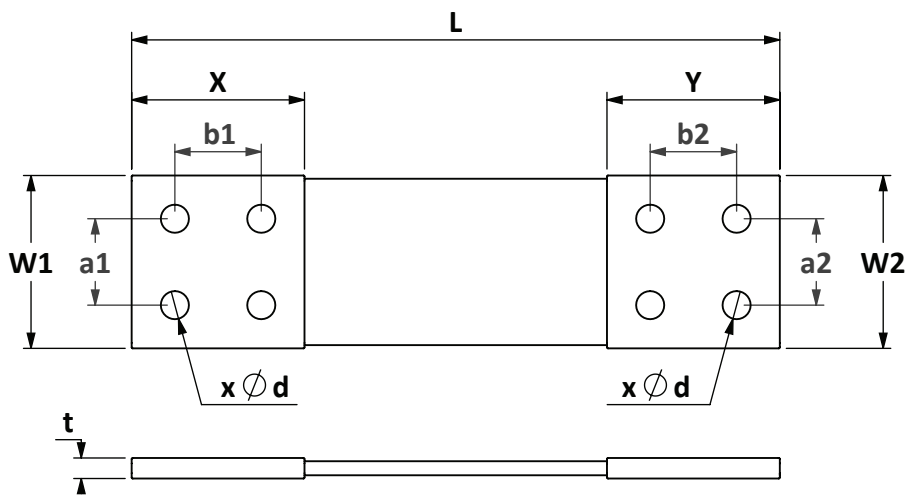
Cu-DHP UNI EN 12449  
 Tin-plated tubular terminals  
 Bare, silver or nickel plated terminals on demand  
 Single wire Cu-ETP UNI EN 13602 - Ø 0,20 mm  
 Special wire on demand  
 Cross section from 10 up to 5.000 mm<sup>2</sup>  
 Terminals width from 8 up to 200 mm  
 Complete current load values listed in technical data  
 Special braid materials and structure on demand  
 Special dimensions and design on demand  
 Aluminium braid on demand  
 Current loads following IEC 439

### Legenda

Type of conductor	Flexible conductor	Coating on terminals	Special treatment	Insulation
			<b>HTD</b> Hot Tin Dipped Terminals	<b>HPE</b> Heat shrinkable Polyolefin
<b>F</b> Flat braid	<b>R</b> Bare copper	<b>R</b> Bare copper		<b>SIL</b> Silicone sleeve
			<b>TSH</b> Tin Sealed Heads	<b>GFI</b> Glass Fiber Insulation
<b>R</b> Round braid	<b>T</b> Tin plated copper	<b>T</b> Tin Plating		<b>RTI</b> Rubber Tube Insulation
			<b>ZSH</b> Zinc Sprayed Heads	<b>SGF</b> Silicon Glass Fiber
<b>T</b> Twisted/Stranded cable	<b>A</b> Aluminium	<b>S</b> Silver Plating		<b>PVC</b> PVC tube
			<b>WH</b> Without Holes	<b>SPI</b> Squared PVC Insulation
		<b>N</b> Nickel Plating		<b>TPE</b> Squared Halogen Free Insulation
				<b>BPS</b> Braided Polyamide Sleeve
		<b>A</b> Aluminium		<b>BPI</b> - Braided Polyester Insulation

# BRAIDED POWER CONDUCTORS

custom made



build your power connection – drawing required - examples

Type	Cross Section	wire	L	W1	a1	X	b1	W2	a2	Y	b2	Ød	t
	mm <sup>2</sup>												
FRR	800	0,20	1000	100	50	100	50	100	50	100	50	13	13
FRT	1000	0,20	450	120	60	100	50	120	60	100	50	14	14,3
FTT	2500	0,20	810	160	80	120	60	160	80	120	60	17	24,5

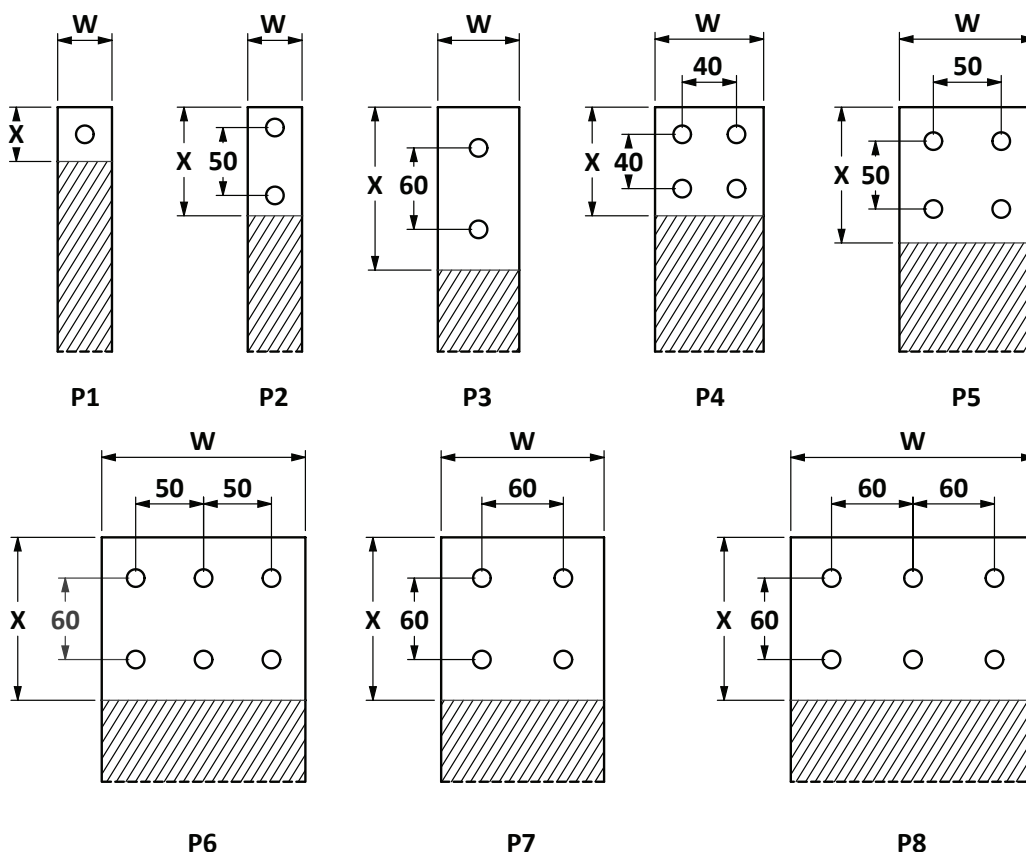
relative ordering code

FRR 800/020-1000/100

FRT 1000/020-450/120-160

FTT 2500/020-810/160

## Standard Drilling Patterns



Custom-made drilling patterns or according to DIN 43673 are also available

# BRAIDED POWER CONDUCTORS

## standard solutions

Bare Copper	Tin-Plated Copper	Cross-Sect.	L	X	W	t	Ød	Drilling	Current load
		mm <sup>2</sup>	dimensions in mm						ΔT 50°C
FRT 10/020-200/10	FTT 10/020-200/10	10	200	10	10	3,5	5	P1	110 A
FRT 10/020-200/12	FTT 10/020-200/12	10	200	12	12	3,2	6	P1	110 A
FRT 16/020-200/15	FTT 16/020-200/15	16	200	15	15	3,5	7	P1	160 A
FRT 16/020-200/17	FTT 16/020-200/17	16	200	17	17	3,3	9	P1	160 A
FRT 25/020-200/20	FTT 25/020-200/20	25	200	20	20	3,7	9	P1	210 A
FRT 25/020-200/22	FTT 25/020-200/22	25	200	22	22	3,5	9	P1	220 A
FRT 25/020-200/25	FTT 25/020-200/25	25	200	25	25	3,3	11	P1	220 A
FRT 35/020-200/22	FTT 35/020-200/22	35	200	22	22	4,1	9	P1	260 A
FRT 35/020-200/25	FTT 35/020-200/25	35	200	25	25	3,8	11	P1	270 A
FRT 50/020-200/25	FTT 50/020-200/25	50	200	25	25	4,6	11	P1	320 A
FRT 50/020-200/30	FTT 50/020-200/30	50	200	30	30	4,2	11	P1	340 A
FRT 50/020-250/35	FTT 50/020-250/35	50	250	35	35	3,8	13	P1	350 A
FRT 75/020-200/30	FTT 75/020-200/30	75	200	30	30	5,2	13	P1	420 A
FRT 75/020-250/35	FTT 75/020-250/35	75	250	35	35	4,8	13	P1	440 A
FRT 100/020-200/30	FTT 100/020-200/30	100	200	30	30	6	13	P1	490 A
FRT 100/020-250/35	FTT 100/020-250/35	100	250	35	35	5,6	13	P1	510 A
FRT 100/020-250/40	FTT 100/020-250/40	100	250	40	40	5,2	13	P1	530 A
FRT 120/020-200/30	FTT 120/020-200/30	120	200	30	30	7	13	P1	540 A
FRT 120/020-250/35	FTT 120/020-250/35	120	250	35	35	6,5	13	P1	560 A
FRT 120/020-250/40	FTT 120/020-250/40	120	250	40	40	6	13	P1	580 A
FRT 150/020-200/30	FTT 150/020-200/30	150	200	30	30	8	13	P1	610 A
FRT 150/020-250/35	FTT 150/020-250/35	150	250	35	35	7,5	13	P1	630 A
FRT 150/020-250/40	FTT 150/020-250/40	150	250	40	40	6,8	13	P1	650 A
FRT 150/020-250/45	FTT 150/020-250/45	150	250	45	45	6,2	13	P1	670 A
FRT 200/020-300/40	FTT 200/020-300/40	200	300	40	40	8,3	13	P1	760 A
FRT 200/020-300/45	FTT 200/020-300/45	200	300	45	45	7,6	13	P1	780 A
FRT 200/020-300/50	FTT 200/020-300/50	200	300	50	50	7	13	P1	810 A
FRT 200/020-350/40	FTT 200/020-350/40	200	350	100	40	8,3	13	P2	760 A
FRT 200/020-350/50	FTT 200/020-350/50	200	350	100	50	7	13	P2	780 A
FRT 250/020-300/40	FTT 250/020-300/40	250	300	40	40	10	13	P1	860 A
FRT 250/020-300/45	FTT 250/020-300/45	250	300	45	45	9	13	P1	890 A
FRT 250/020-300/50	FTT 250/020-300/50	250	300	50	50	8,3	13	P1	910 A
FRT 250/020-350/40	FTT 250/020-350/40	250	350	100	40	10	13	P2	860 A
FRT 250/020-350/50	FTT 250/020-350/50	250	350	100	50	8,3	13	P2	910 A
FRT 300/020-300/45	FTT 300/020-300/45	300	300	45	45	10,6	13	P1	980 A
FRT 300/020-300/50	FTT 300/020-300/50	300	300	50	50	9,5	13	P1	1000 A
FRT 300/020-300/60	FTT 300/020-300/60	300	300	60	60	8,5	13	P1	1050 A

page 42 to page 45 for other electrical data

# BRAIDED POWER CONDUCTORS

## standard solutions

Bare Copper	Tin-Plated Copper	Cross-Sect.	L	X	W	t	Ød	Drilling	Current load
		mm <sup>2</sup>	dimensions in mm						ΔT 50°C
FRT 300/020-400/45	FTT 300/020-400/45	300	400	80	45	10,6	13	P2	980 A
FRT 300/020-400/50	FTT 300/020-400/50	300	400	100	50	9,5	13	P2	1000 A
FRT 300/020-400/60	FTT 300/020-400/60	300	400	120	60	8,5	13	P2	1050 A
FRT 300/020-400/70	FTT 300/020-400/70	300	400	120	70	8,3	13	P2	1110 A
FRT 400/020-300/50	FTT 400/020-300/50	400	300	50	50	12	13	P1	1180 A
FRT 400/020-400/40	FTT 400/020-400/40	400	400	80	40	15	13	P2	1130 A
FRT 400/020-400/50	FTT 400/020-400/50	400	400	100	50	12	13	P2	1180 A
FRT 400/020-400/60	FTT 400/020-400/60	400	400	120	60	10,5	13	P3	1230 A
FRT 400/020-400/80	FTT 400/020-400/80	400	400	80	80	9,5	13	P4	1340 A
FRT 400/020-400/100	FTT 400/020-400/100	400	400	100	100	8	13	P5	1430 A
FRT 400/020-400/120	FTT 400/020-400/120	400	400	120	120	7	13	P7	1520 A
FRT 500/020-400/50	FTT 500/020-400/50	500	400	100	50	14,5	13	P2	1330 A
FRT 500/020-400/60	FTT 500/020-400/60	500	400	120	60	12,5	13	P3	1390 A
FRT 500/020-400/80	FTT 500/020-400/80	500	400	80	80	11	13	P4	1510 A
FRT 500/020-400/90	FTT 500/020-400/90	500	400	120	90	10	13	P4	1560 A
FRT 500/020-400/100	FTT 500/020-400/100	500	400	100	100	9,2	13	P5	1610 A
FRT 500/020-450/120	FTT 500/020-450/120	500	450	120	120	8,5	13	P7	1720 A
FRT 500/020-450/140	FTT 500/020-450/140	500	450	120	140	8,5	13	P7	1800 A
FRT 500/020-450/150	FTT 500/020-450/150	500	450	120	150	7	13	P6	1840 A
FRT 500/020-450/160	FTT 500/020-450/160	500	450	120	160	9	13	P6	1890 A
FRT 500/020-500/200	FTT 500/020-500/200	500	500	120	200	9	13	P8	2040 A
FRT 600/020-400/60	FTT 600/020-400/60	600	400	100	60	16	13	P2	1550 A
FRT 600/020-400/70	FTT 600/020-400/70	600	400	120	70	14	13	P3	1600 A
FRT 600/020-400/80	FTT 600/020-400/80	600	400	80	80	12,5	13	P4	1660 A
FRT 600/020-400/90	FTT 600/020-400/90	600	400	120	90	11,5	13	P4	1720 A
FRT 600/020-400/100	FTT 600/020-400/100	600	400	100	100	10,5	13	P5	1770 A
FRT 600/020-450/120	FTT 600/020-450/120	600	450	120	120	9,5	13	P7	1880 A
FRT 600/020-450/140	FTT 600/020-450/140	600	450	120	140	9,3	13	P7	1980 A
FRT 600/020-450/150	FTT 600/020-450/150	600	450	120	150	8	13	P6	2020 A
FRT 600/020-450/160	FTT 600/020-450/160	600	450	120	160	8	13	P6	2060 A
FRT 600/020-450/180	FTT 600/020-450/180	600	450	120	180	9	13	P8	2150 A
FRT 600/020-500/200	FTT 600/020-500/200	600	500	120	200	10	13	P8	2240 A
FRT 800/020-400/80	FTT 800/020-400/80	800	400	80	80	15,5	13	P4	1940 A
FRT 800/020-400/100	FTT 800/020-400/100	800	400	100	100	13	13	P5	2060 A
FRT 800/020-450/120	FTT 800/020-450/120	800	450	120	120	11,5	13	P7	2180 A
FRT 800/020-450/140	FTT 800/020-450/140	800	450	120	140	11	13	P7	2290 A
FRT 800/020-450/150	FTT 800/020-450/150	800	450	120	150	10	13	P6	2340 A

# BRAIDED POWER CONDUCTORS

## standard solutions

Bare Copper	Tin-Plated Copper	Cross-Sect.	L	X	W	t	Ød	Drilling	Current load
		mm <sup>2</sup>	dimensions in mm						ΔT 50°C
FRT 800/020-450/160	FTT 800/020-450/160	800	450	120	160	11,2	13	P6	2400 A
FRT 800/020-450/180	FTT 800/020-450/180	800	450	120	180	10,5	13	P8	2490 A
FRT 800/020-500/200	FTT 800/020-500/200	800	500	120	200	11	13	P8	2590 A
FRT 1000/020-450/80	FTT 1000/020-450/80	1000	450	80	80	19	13	P4	2200 A
FRT 1000/020-450/100	FTT 1000/020-450/100	1000	450	100	100	15,5	13	P5	2320 A
FRT 1000/020-450/120	FTT 1000/020-450/120	1000	450	120	120	14,5	13	P7	2450 A
FRT 1000/020-500/140	FTT 1000/020-500/140	1000	500	120	140	13	13	P7	2570 A
FRT 1000/020-500/150	FTT 1000/020-500/150	1000	500	120	150	13,3	13	P6	2630 A
FRT 1000/020-500/160	FTT 1000/020-500/160	1000	500	120	160	12,8	13	P6	2690 A
FRT 1000/020-500/180	FTT 1000/020-500/180	1000	500	120	180	12,0	13	P8	2800 A
FRT 1000/020-500/200	FTT 1000/020-500/200	1000	500	120	200	12,5	13	P8	2900 A
FRT 1200/020-450/100	FTT 1200/020-450/100	1200	450	100	100	18	15	P5	2560 A
FRT 1200/020-450/120	FTT 1200/020-450/120	1200	450	120	120	16,5	15	P7	2700 A
FRT 1200/020-500/140	FTT 1200/020-500/140	1200	500	120	140	14,6	15	P7	2830 A
FRT 1200/020-500/150	FTT 1200/020-500/150	1200	500	120	150	15	15	P6	2900 A
FRT 1200/020-500/160	FTT 1200/020-500/160	1200	500	120	160	14,3	15	P6	2960 A
FRT 1200/020-500/180	FTT 1200/020-500/180	1200	500	120	180	13,5	15	P8	3070 A
FRT 1200/020-500/200	FTT 1200/020-500/200	1200	500	120	200	13,5	15	P8	3180 A
FRT 1500/020-450/100	FTT 1500/020-450/100	1500	450	120	100	22	15	P5	2900 A
FRT 1500/020-450/120	FTT 1500/020-450/120	1500	450	120	120	20	15	P7	3050 A
FRT 1500/020-500/140	FTT 1500/020-500/140	1500	500	120	140	16,2	15	P7	3180 A
FRT 1500/020-500/150	FTT 1500/020-500/150	1500	500	120	150	17,5	15	P6	3260 A
FRT 1500/020-500/160	FTT 1500/020-500/160	1500	500	120	160	16,6	15	P6	3320 A
FRT 1500/020-500/180	FTT 1500/020-500/180	1500	500	120	180	15,5	15	P8	3440 A
FRT 1500/020-500/200	FTT 1500/020-500/200	1500	500	120	200	15,5	15	P8	3570 A
FRT 1800/020-450/120	FTT 1800/020-450/120	1800	450	120	120	23	15	P7	3370 A
FRT 1800/020-500/140	FTT 1800/020-500/140	1800	500	120	140	19	15	P7	3500 A
FRT 1800/020-500/150	FTT 1800/020-500/150	1800	500	120	150	20	15	P6	3590 A
FRT 1800/020-500/160	FTT 1800/020-500/160	1800	500	120	160	19	15	P6	3660 A
FRT 1800/020-500/180	FTT 1800/020-500/180	1800	500	120	180	17,5	15	P8	3790 A
FRT 1800/020-500/200	FTT 1800/020-500/200	1800	500	120	200	17,5	15	P8	3930 A
FRT 2000/020-450/120	FTT 2000/020-450/120	2000	450	120	120	25	15	P7	3570 A
FRT 2000/020-500/140	FTT 2000/020-500/140	2000	500	120	140	21	15	P7	3710 A
FRT 2000/020-500/150	FTT 2000/020-500/150	2000	500	120	150	22	15	P6	3800 A
FRT 2000/020-500/160	FTT 2000/020-500/160	2000	500	120	160	21	15	P6	3870 A
FRT 2000/020-500/180	FTT 2000/020-500/180	2000	500	120	180	19	15	P8	4010 A
FRT 2000/020-500/200	FTT 2000/020-500/200	2000	500	120	200	18,5	15	P8	4150 A

page 42 to page 45 for other electrical data

# BRAIDED POWER CONDUCTORS

## standard solutions

Bare Copper	Tin-Plated Copper	Cross-Sect.	L	X	W	t	Ød	Drilling	Current load
		mm <sup>2</sup>	dimensions in mm						ΔT 50°C
FRT 2200/020-450/120	FTT 2200/020-450/120	2200	450	120	120	27	15	P7	3760 A
FRT 2200/020-500/140	FTT 2200/020-500/140	2200	500	120	140	24,5	15	P7	3920 A
FRT 2200/020-500/150	FTT 2200/020-500/150	2200	500	120	150	23,5	15	P6	4000 A
FRT 2200/020-500/160	FTT 2200/020-500/160	2200	500	120	160	22	15	P6	4070 A
FRT 2200/020-500/180	FTT 2200/020-500/180	2200	500	120	180	21,5	15	P8	4220 A
FRT 2200/020-500/200	FTT 2200/020-500/200	2200	500	120	200	20	15	P8	4360 A
FRT 2400/020-450/120	FTT 2400/020-450/120	2400	450	120	120	29	15	P7	3950 A
FRT 2400/020-500/140	FTT 2400/020-500/140	2400	500	120	140	26,5	15	P7	4110 A
FRT 2400/020-500/150	FTT 2400/020-500/150	2400	500	120	150	25	15	P6	4190 A
FRT 2400/020-500/160	FTT 2400/020-500/160	2400	500	120	160	24	15	P6	4260 A
FRT 2400/020-500/180	FTT 2400/020-500/180	2400	500	120	180	23	15	P8	4420 A
FRT 2400/020-500/200	FTT 2400/020-500/200	2400	500	120	200	20	15	P8	4550 A
FRT 3000/020-450/120	FTT 3000/020-450/120	3000	450	120	120	33,5	15	P7	4460 A
FRT 3000/020-500/140	FTT 3000/020-500/140	3000	500	120	140	32	15	P7	4650 A
FRT 3000/020-500/150	FTT 3000/020-500/150	3000	500	120	150	30	15	P6	4730 A
FRT 3000/020-500/160	FTT 3000/020-500/160	3000	500	120	160	28,5	15	P6	4810 A
FRT 3000/020-500/180	FTT 3000/020-500/180	3000	500	120	180	27	15	P8	4980 A
FRT 3000/020-500/200	FTT 3000/020-500/200	3000	500	120	200	24	15	P8	5130 A
FRT 3600/020-450/120	FTT 3600/020-450/120	3600	450	120	120	40	15	P7	4960 A
FRT 3600/020-500/140	FTT 3600/020-500/140	3600	500	120	140	37	15	P7	5150 A
FRT 3600/020-500/150	FTT 3600/020-500/150	3600	500	120	150	35	15	P6	5230 A
FRT 3600/020-500/160	FTT 3600/020-500/160	3600	500	120	160	33	15	P6	5320 A
FRT 3600/020-500/180	FTT 3600/020-500/180	3600	500	120	180	31	15	P8	5490 A
FRT 3600/020-500/200	FTT 3600/020-500/200	3600	500	120	200	27,5	15	P8	5650 A
FRT 4500/020-450/120	FTT 4500/020-450/120	4500	450	120	120	50	15	P7	5670 A
FRT 4500/020-500/150	FTT 4500/020-500/150	4500	500	120	150	42,5	15	P6	5940 A
FRT 4500/020-500/160	FTT 4500/020-500/160	4500	500	120	160	41	15	P6	6030 A
FRT 4500/020-500/180	FTT 4500/020-500/180	4500	500	120	180	36	15	P8	6190 A
FRT 4500/020-500/200	FTT 4500/020-500/200	4500	500	120	200	33	15	P8	6370 A
FRT 5000/020-450/120	FTT 5000/020-450/120	5000	450	120	120	55	15	P7	6040 A
FRT 5000/020-450/140	FTT 5000/020-450/140	5000	450	120	140	50	15	P7	6230 A
FRT 5000/020-450/160	FTT 5000/020-450/160	5000	450	120	160	48	15	P6	6440 A
FRT 5000/020-450/180	FTT 5000/020-450/180	5000	450	120	180	45	15	P8	6630 A
FRT 5000/020-450/200	FTT 5000/020-450/200	5000	450	120	200	36	15	P8	6750 A